

Nano SPY T1 Mini Temperature Data Logger



Non contractual photo

Presentation

The Nano SPY T1 sensor measures, records temperature and transmits its data to a nearby LINK module via 2.4 GHz radio frequency communication. The data are then automatically sent to the JRI secure Cloud for hosting, and will be managed on the JRI MySirius web application.

If thresholds are exceeded, alerts are transmitted in real time to react immediately. Small and robust, it is designed to monitor temperature directly from inside the chambers. The calibration can be realized by simple exchange.

Technical features

| | |
|-----------------------------------|---|
| Interface | Status LED lights and On/Off touch sensitive button |
| Measurement range | -40°C to +85°C |
| Accuracy | ±0,3°C de -18°C à +50°C and ±0.5°C out of this range |
| Communication frequency | 2,4 GHz (802.15.4) |
| Memory | 10 000 data points |
| Sensor | Internal PT100 |
| Operating conditions | -40°C to +85°C |
| Resolution | 0.01 |
| Measuring and transmission period | 1 mn |
| Internal memory recording period | Adjustable from 1 mn to 24 hrs |
| Response time S ₉₀ | ~ 10 mn |
| Protection | IP68 |
| Case | Polycarbonate – Food contact |
| Power supply | Lithium 3,6v battery - Replacement |
| Battery life | 6 years |
| Dimensions and weight | 63 x 42 x 25 mm / ~ 60 g |
| Fixation | Fixing eyelets and integrated magnets |
| Supplied with | 3 identification rings pack : blue, green and grey Double-sided tape and protective shell User manual can be download on www.jri-mms.com |
| Compliance | CE, ROHS, FCC, ETS 300-328, EN 12830 |
| Standard calibration points | -25°C/ +5°C/ +25°C |

Benefits

- **Easy-to-use**
The sensor is ready to use and has operating and alarm lights



- **Excellent measurement quality**



Fixing eyelets



Replaceable battery



Refrigerator version

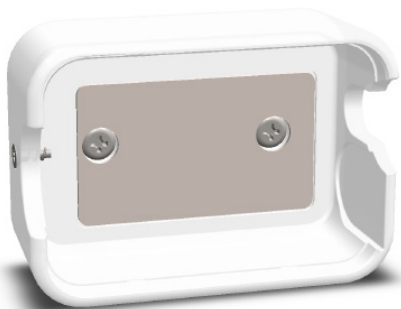


Ambient version

PART NRS
11567 E : Nano SPY T1
11567 X : Nano SPY T1 without
battery

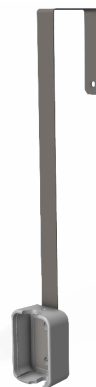
Document non contractuel

Accessories



Protective shell Part nr. 12715

The protective shell is used to protect all Nano SPY mini-data loggers from shocks. It is supplied with a double-sided adhesive to be glued to all surfaces and an anti-theft screw for the Nano SPY. It can also be screwed (screws no supplied).



Caliper for protective shell Part nr. 12716

The caliper is designed for the fixing of a protective shell of Nano SPY on cabinets with horizontal opening to facilitate cleaning operations. The protective shell of Nano SPY can be directly glued to the bottom of the bracket and/or fixed with screws (provided).